

20 21

CORRAL RIDING ACADEMY 2020-21 Annual Report





OUR MISSION:

CORRAL is a faith-motivated nonprofit that equips adolescent girls in high-risk situations through a long-term, holistic program of equine therapy and education to prepare each girl and her community with skills, resources, and opportunities so that she can gain access to a bright future.

OUR VISION:

Ending the cycle to intergenerational trauma and systemic marginalization in our community.

CORE VALUES:



FAITH & CHOICE



RELATIONSHIPS-FIRST
& COMMUNITY



HIGH EXPECTATIONS
& ACCOUNTABILITY



SAFETY & RISK-TAKING



INNOVATION & GRIT



GRACE & LEARNING

Dear CORRAL Community,

God intended for all of us to thrive. But, not everyone has equal access to this bright future. By experiencing individual, family or social trauma, our girls have the odds stacked against them. This is where CORRAL shows up, giving our girls “a leg up in life” and doing **whatever it takes** to better serve them, even if that means transforming our entire program into a day school during a period of crisis.

When the pandemic first hit, we briefly tried virtual programming, but the vacancy of community support was devastating for our youth. Overnight, we saw overdoses, trafficking, homelessness, domestic violence and mental health emergencies skyrocket. There were several weeks when I had emergency services on speed dial. When Wake County Public School announced classes would be virtual, I knew the effects on our girls and their families would be disastrous. Parents needed to continue to go to work. But our youth, who on average enter the program **four grade levels behind in math and reading**, didn't have the skills to be effective in virtual schooling without supervision. I knew that if we didn't respond to the gap school was leaving in their lives, we'd lose girls to gangs, trafficking, suicide, and homelessness. The girls we wouldn't lose would fall even further behind, making access to a bright future improbable.

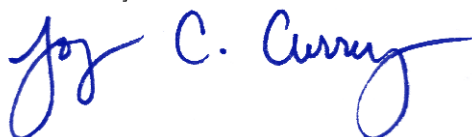
So, I felt uniquely positioned to fill the gaps that school had left in our girls' lives and convert this crisis to an opportunity. With my background and a team of some of the best professionals in the field, I felt we were equipped to create a homeschool pod for our girls. We'd provide a therapeutic environment for our girls to receive tutoring, therapy, vocational skills and intensive support to complete their online schooling. We went from an after-school and weekend program to a day program, shifting from seeing our girls 11 to 40 hours every week. I shifted from Executive Director to Headmaster, greeting the girls at 6:45am every morning and saying goodbye to them every afternoon at 5pm. Our commitment to stewarding our resources well was evident in how we shifted resources to serve our youth when they needed it most, to do whatever it would take. Our staff, board and volunteers also made significant sacrifices to make this shift.

The results were **amazing**. We had one senior who entered CORRAL with a 1.0 GPA yet graduated on the A honor roll and is attending college this fall. 75 percent of our girls had C's or better. Our veteran girls (they started the program before the pandemic) earned a 3.6 GPA; while our newbies (girls who started during the pandemic) had their best grades ever. It was also so exciting to see how much they grew in independence and intrinsic motivation in the collegiate environment we built at the farm.

While we'd love to continue our emergency day program, it's unrealistic to expect that girls and families will stay in virtual schooling to continue participating at CORRAL. It's also unsustainable for our 10-year picture to serve as a replacement for the public school system. However, we're beginning a process to research a long-term schooling partner who is equally committed to closing the Achievement Gap. And, we're considering adding a Day Program to our existing repertoire of programs. Finally, we're taking what we've learned from this past year into the upcoming academic year: more time on task, individual therapy and a collegiate model program.

CORRAL is weathering the pandemic and will continue to earnestly pursue our mission because our community believes **every girl deserves a bright future**. It takes more than a visionary to give our girls “a leg up in life.” It takes an entire community elevating and restoring power to the precious young women we have the privilege of serving. I thank God and this community for recognizing the need for our program, believing in our ability to serve our girls well and lending to the long-term sustainability of this organization. Together, we are leaving an indelible mark on our girls' lives, **the impact of which is felt by generations to come**.

Sincerely,



Joy Currey, Co-Founder and Executive Director

WHAT MAKES CORRAL UNIQUE



Holistic and Long-Term

Our program offers family support, life skills training, college and career preparation, academic

tutoring, equine-assisted psychotherapy (EAP), vocational training and mentorship.



Research-Validated

CORRAL reverses the cycle of trauma and negative individual and community outcomes

by restoring broken attachment through communicative resilience.



Measurable Outcomes

Our five-component programmatic plan guarantees that our youth (highest-risk and with the lowest number of resources)

will experience transformational change measured by GPA improvement, risk assessment, court involvement and future endeavors.



Licensed Therapists

A Licensed Clinical Mental Health Counselor is an essential piece of ethical EAP practices. Katie Zucco and Heather Brewer are

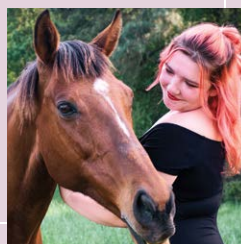
CORRAL's full-time, licensed Mental Health Services Managers at the Neuse River and Kildaire Farm Campus.



Trauma-Informed

Rooted in adverse childhood experiences intervention, our program helps our girls rebuild relationships by learning and applying

new skills with their horses, such as seeking attention healthily, establishing boundaries and demonstrating assertiveness.



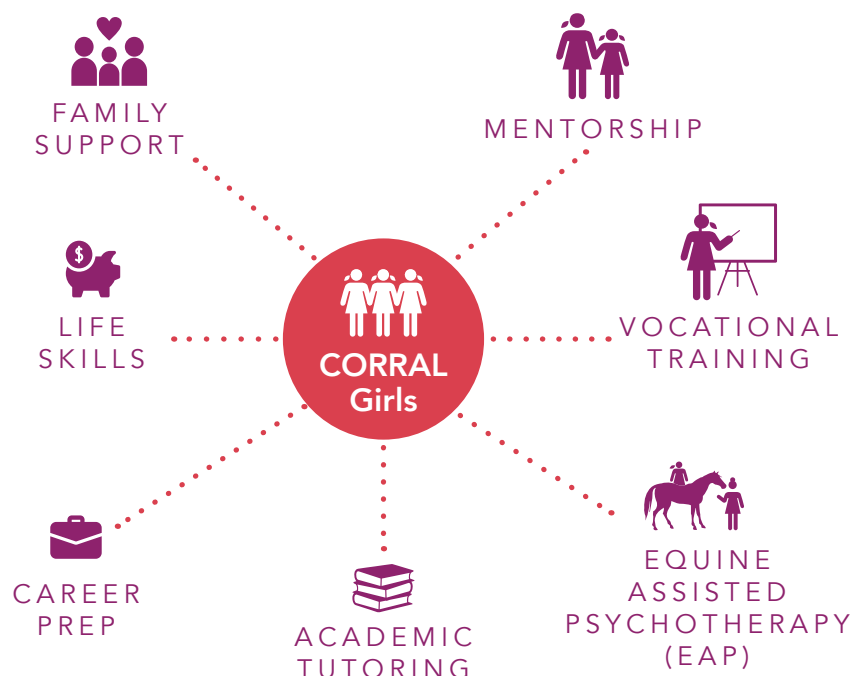
Sustainable Business

We are audited by third parties, partially funded by government and private programs and foundations, and rated Gold in 2021

by Guidestar, a public charity that collects and shares information about every IRS-registered non-profit organization.

OUR PROGRAM

Rooted in equity, our program **restores access and opportunities to underserved girls** referred by community partners who hold the capacity for change but face highly risky situations: neighborhood/ socioeconomic status, intergenerational trauma, gang involvement, abuse, trauma, neglect, or foster care. Once a girl participates in and successfully completes Join the Herd, a 22-session psychoeducational course, she is invited to apply for the Riding Academy, our holistic, individualized, long-term program. Transformational change does not occur overnight for our youth nor with one-size-fits-all services. This is why we invest considerable time and resources into each girl based on her unique circumstances.



- 25% Court
- 20% Partner Agencies
- 19% Mental Health Services
- 17% Human Services
- 15% Family and Friends
- 4% Police

20-21 PROGRAM OUTCOMES

ABC
71% of our girls had C's or better

79 Girls Served



86% of our girls (all time) have matriculated into college



Girls **2+ Years** in the Program earned an average 3.6 final GPA

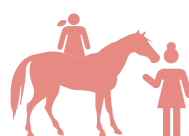
20-21 PROGRAM IMPACT



921 program hours per week



592 total academic tutoring sessions



449 total EAP sessions



549 college/ career prep and life skills hours

IMPACT

FAMILIES

The pandemic highlighted an area of opportunity for our program to be even more effective: family support. Beyond basic needs, we recognized we could better serve our families by taking a systems approach to our program and relating to families as partners in this work. While we offer family counseling, CORRAL works with an **extensive partner network to connect families with community resources** when the needs of the family or girl extend beyond CORRAL's scope of services and require higher care.

IMPACT ON FAMILIES



31 families served



2,418 hours
invested in families

FAMILY SUPPORT RESOURCES

Housing

Internet

Higher-care psychiatrists

Employment

Parent support groups

Vehicles and gas

Homeschooling

Groceries

College counselors

Laptops

"I can't imagine our life this past year without CORRAL. CORRAL has absolutely supported my role as a caretaker; as a new foster parent, this was SO necessary. I've been able to support my child in other ways, which eased the strain on our relationship from being together 24/7. By having more trusted adults in her life, I was able to take a step back and let her have more autonomy in addressing her behaviors. When issues came up, the CORRAL staff was able to help her and include me in addressing and resolving them — something that by ourselves would have been incredibly difficult. And for my child, she made more progress in her semester and a half at CORRAL than she had with her regular talk therapist in two whole years.

Our girls need safe spaces like CORRAL to support them in getting themselves on the right track in life. They need this program to socialize in healthy ways, learn vital skills, and gain academic support on top of that! It

*really makes a huge difference in their outlooks for the future; and right there uplifts the communities they are a part of. It's a ripple effect, so **for every girl CORRAL helps, she has a whole network of family and friends who are also supported.** CORRAL is truly providing an opportunity for a **STRONG** re-start in life at such a vital age, the impact of which will be felt for generations."*

~ Ray, a CORRAL Parent



EVERY GIRL BLOSSOMS IN HER OWN SEASON

This past year, two CORRAL alumni were hired by CORRAL and are currently on track to become change makers and advocates for the voiceless in their communities. But, not every girl's success is quantified by the number we report at the end of each year. Sometimes, we lose girls to circumstances outside of our control and their stories look different than becoming college bound while in high school. But, what is certain is **every CORRAL girl uses the skills they learn at CORRAL throughout their lifetime.**

Maddie, Neuse River's first Riding Academy participant



*I've been in therapy since 6th grade but CORRAL was the only type of therapy that actually worked. When I was at CORRAL, I was also in travel softball, working a full-time job, going to school and was only 17 years old. During that time, I always kept busy and was doing great on the outside. But, I was mentally, emotionally and physically exhausted, which I never told anybody, which made it worse. And, the public school system was not a good environment for me; I kept walking out of class getting frustrated with others. I ended up being hospitalized and when I dropped out of high school in 2020, Ms. Katie and Ms. Lauren would call me and check up on me all the time, to make sure I was okay. Ms. Katie normalized asking for help and speaking up when something's wrong. **They taught me tools that I could take home***

***and that I'm still using today.** I would tell any other girl at CORRAL to give it a try and don't give up easily. The results of the program are positive. After graduation, I became a summer intern at CORRAL and now, I'm working full-time and planning for college.*

Ollie, a former CORRAL participant

*I used to attend CORRAL for three years before having a big falling out with my parents and leaving the house and starting my own life. I stayed with friends and couch surfed for a bit. **CORRAL helped me stay emotionally strong by helping me find a temporary shelter.***

As much as I hated the place, I'm thankful for it because it helped me meet new people and still get help from CORRAL without being in the program. I'm very thankful for Ms. Heather who came to visit me everyday and make sure I was okay in every way. Ms. Dawn would come over weekly and take me out to get a proper meal and just hang out with me, making sure I was okay. Ms. Samantha would always help me try to get into helpful programs. I would also like to thank Ms. Joy for pushing me to do better - it means so much to me. CORRAL has given me a big leg up in life and I thank everyone who put in the effort to get me where I am now. I live alone and have a full-time job. I would like to come back one day to show everyone how I've changed for the better because of the team at CORRAL.



DIVERSITY, EQUITY & INCLUSION

As leaders in the fight for social justice and breaking barriers within historically exclusive systems, we have to be forward thinking, innovative, inclusive and compassionate. By embracing diversity, equity and inclusion (DEI) as an organizational value, we're intentionally making space for positive outcomes and change to flourish.

In 2019, CORRAL committed to Ericka James' Kingdom Diversity Model. We are currently working toward moving our organization from Stage 3 where we recognize that diversity is an issue and take action accordingly, to Stage 4, where we are making significant progress in our DEI goals.

DIVERSITY

This past fiscal year, we took the following steps forward:

- Formed a DEI Taskforce that invested over 160 hours in developing DEI work.
- Conducted an organization-wide survey to assess our organizational blindspots and assets.
- Created a two-year plan to address critical areas to further this work and set specific diversity goals.
- Invested in staff training and professional development in Racial Equity Training (REI) and DEI.
- Engaged and invested in a specialized consultant to support DEI hiring practices.

INCLUSION



FINANCES

TOTAL CONSOLIDATED INCOME

14% COVID Economic Injury Disaster Loan

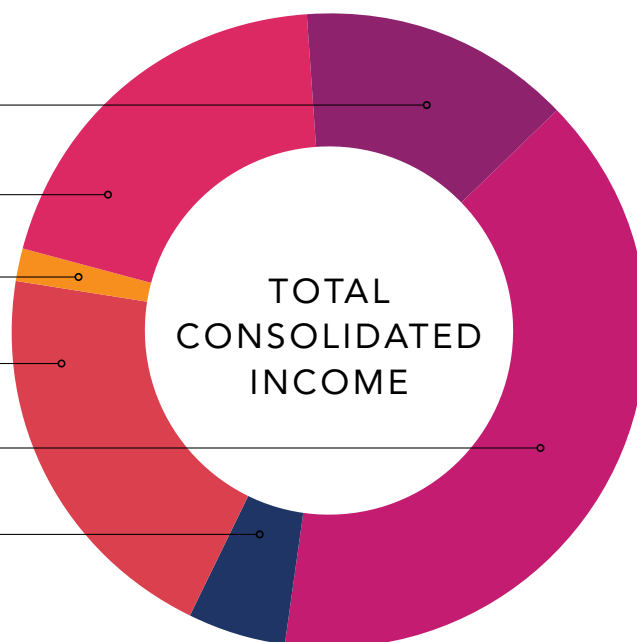
20% Foundations and Trusts

2% Public Grants (Non-Gov.)

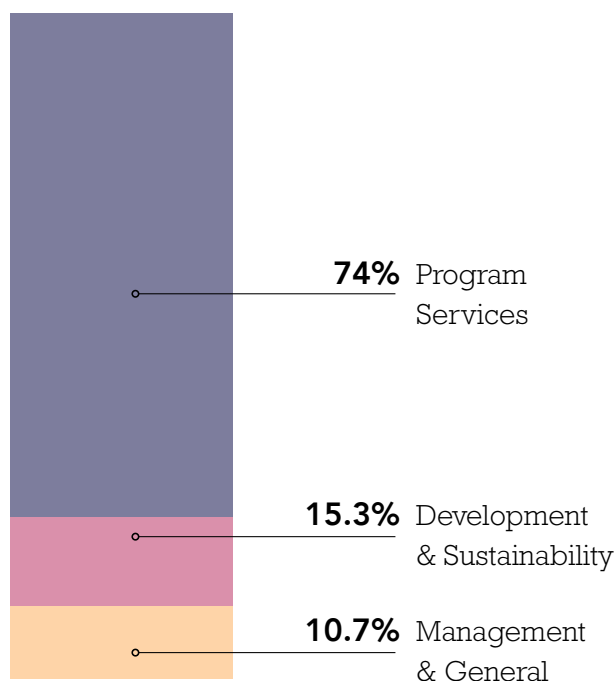
20% Government Grants

39% Individual Donations

5% Corporate Donations



EXPENSES



TOGETHER WE RAISED

\$949,045



1,023 Total Donors



453 Returning Donors

WE INVESTED

\$760,011 to fund programs that provided 79 girls and their families access to bright futures

\$156,433 in financial sustainability, community partnership, marketing, and resource development

\$108,849 to fund general operating expenses

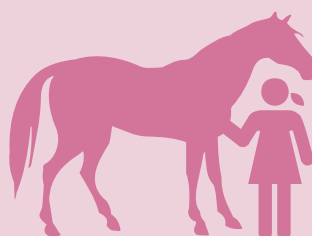
OUR INVESTMENT IN BRIGHT FUTURES

Riding Academy Girl (11 months): **\$18,707**

Join the Herd Girl (12 Weeks): **\$1,364**

EAP Horse (11 months): **\$5,065**

**The average cost to incarcerate a youth is \$70K.*



STRONGER TOGETHER

A sense of community and a collective willingness to serve marginalized youth have always been CORRAL hallmarks. They're deep in our philosophy. They show up in how much we depend on each other, how we're bound in this mission together, and how we are willing to make sacrifices in our lives for our girls. Our efforts are only as strong as our partners, volunteers and supporters. CORRAL volunteers have big hearts and busy lives. But, what makes them special is **they show up, they're dependable**. Our girls see that. We see that.

VOLUNTEERS

313 Active Volunteers

18,863 Total Service Hours

\$538,350 worth of time

Our volunteers served our mission with enough hours to equal nine full-time employees!



Mark, a CORRAL Volunteer

"Every girl is different and has a different foundation depending on her story. Some of them were still counting on their fingers or struggling with their times table, which was wild for me to see as a tutor and eye-opening. It reinforces why we're here for them. It's important for people who have been fortunate like myself to give back. This year was easier for me as a tutor (even when I was tutoring five girls at the same time in early fall) because I had the girls' trust and was working with them daily. Before, I'd see them a couple of times a week and they'd come to me after a long day at school filled with

drama — the last thing they wanted to work on was math. One girl I worked with had a ton of overdue assignments and spent her entire Christmas break catching up. I would log on at home to see if she had any missing assignments and it was incredible to see her take initiative. Turning in assignments proved to be an effective way to improve grades and then if the girls are turning in their assignments and doing the work, they're learning the material and performing better on tests and quizzes. The next thing is they're starting to ask about college."

AMPLIFY THEIR VOICES

"Writing empowers students who have been marginalized due to systemic racial, ethnic, and social inequities, and such writing practices can lead to socio-emotional growth. Sharing these written pieces in community spaces allows students to navigate their way out of stereotypes and present themselves as individuals beyond external labels."

~ Crystal Lee, Assistant Professor, CORRAL Board Member
and Founding Director of the LCI



NIGHT OF STORIES

Poetry and short story reading
from one out of the two published LCI
books featuring the CORRAL girls

200+ community members attended
the live-stream reading



20-21 ANNUAL GIVING CAMPAIGN

A fundraising campaign to amplify
the voices of our girls and support
our full-time Day School

456 donors raised **\$332K**, out of
which **91%** was raised from existing
CORRAL donors

WALK. RUN. RIDE.

A virtual 5K to generate community
awareness and support summer
programming at CORRAL

293 race registrants raised **\$67,152**

Serena, a CORRAL Participant

Serena was failing all of her classes when she arrived at CORRAL and finished the year with A's and B's. She couldn't add without drawing a number line, but now she's doing Algebra independently. **When she learned how to advocate for herself**, she began to ask for her daily contracts to take them home. Quiet by nature, she has truly come out of her shell, volunteering to lead tours of the Neuse River Campus for visitors, new volunteers, donors or other community members. She's made great improvement in her relationships at home and with adults. Serena attended Night of Stories in December of 2020 and while she was too nervous that night to participate, she felt inspired to write and read poetry for the second LCI reading in an auditorium this past spring. She was the only middle schooler to amplify her voice in a public space.



CORRAL

RIDING ACADEMY

Kildaire Farm Campus

3620 Kildaire Farm Road, Cary, NC 27518

Neuse River Campus

2436 Neusehill Lane, Raleigh, NC 27610

info@corralriding.org

STAY CONNECTED



CORRALRIDING.ORG

LOOKING AHEAD

Since 2008, CORRAL has served 354 young women. While our participants have multiple odds stacked against them any given year, this past year revealed the dire need for our services and the difference CORRAL can make during one of the most pivotal moments in their lives. As we return to after-school programming this fall, we fully commit to maintaining program excellence and better serving our families through community resources. We also know there are hundreds more young women in the greater Triangle area who need our services. **By June 2024, we hope to open our third farm while our pilot and first satellite campus operate at full capacity.** This is our three-year path toward restoring access and opportunities to the underserved youth in our community.

WILL YOU WALK ALONGSIDE US?

BOARD OF DIRECTORS

Joy Currey, Co-Founder, Executive Director
Robert Currey, Co-Founder, Board Secretary
Tracy Doaks, Board Member
Joe Honeycutt, Board Member
Denise Huska, Board Member
Crystal Lee, Board Member
Dan Michel, Board Member
Jeff Moore, Board Member
Dan Pratt, Board Chair

STAFF

Heather Brewer, Manager of Mental Health Services, Kildaire Farm Campus
Jennifer Brown, Community Relations Manager
Lauren Clements, Managing Director, Neuse River Campus
Joy Currey, Founder & Executive Director
Shera Everette, Education Manager, Neuse River Campus
Dakota Getrouw, Equine Manager
Christina Lashley, Program/Executive Assistant
J'naya Marville, Education Manager, Kildaire Farm Campus
Erendira Ramirez, LatinX Community Liaison
Janvika Shah, Marketing Manager
Alison Smitley, Creative Manager
Neyra Toledo-Osorio, Director of Corporate Operations
Katie Zucco, Manager of Mental Health Services, Neuse River Campus

SUPPORTERS

1,031 Donors
74 Monthly Donors

GOVERNMENT GRANTS

City of Raleigh
JCPC
Town of Cary

JOIN US

PARTNERS

Amazon Smiles
Apex United Methodist Church — Shepherd Sunday School Class
Care First Animal Hospital
Cary Keisler, Inc. — Smithfield Chicken & BBQ
Christ The King Lutheran Church
Consultwebs
Creative Insurance Solutions
Dram & Draught
Fairway Independent Mortgage Corp.
Glenaire Residents Association
Hayes Barton United Methodist Church
HH Architecture
Holy Trinity Church of Raleigh
Leaf & Limb
LifePlan Group
Melaleuca
Peak City Gym
Pierce Group Benefits
Reconciliation Church
RestorePro Reconstruction
RMF Engineering, Inc
RTI International
Seqirus
Shelor College Consulting
Syntax
Sweetwater Plumbing
The Butcher's Market
Triangle Technology Executives Council
Vistra Business Solutions
WingSwept, LLC

PUBLIC GRANTS

Raleigh Kiwanis
Suntrust — Truist Foundation
Wake Electric Care, Inc. Operation RoundUp
William C. Etheridge Foundation



FOUNDATIONS AND TRUSTS

4Others Foundation
American Tower Foundation
Anonymous
Brent Burgess
Cary Kildaire Rotary Club
Cary MacGregor Rotary Foundation
Corbin and Byerly Graves
Corrie and John Bitsas
Craig and Christine Stephenson
Dameron Family Foundation
Dianne Breeden
The Dorothy Cate and Thomas F. Frist Foundation
Harris Family Charitable Fund of Triangle Community Foundation
James and Mildred Wilkinson Charitable Foundation
John W. Pope Foundation
Humanitarian Grant
Lissa and David Lutz
Luke Garrison Foundation
Mission Triangle
Palin Foundation
Pratt Family Charitable Gift Fund
Ryan and Anna Applegate
The Reis Family Foundation
Schanz Family Charitable Fund
Scott Burwell
Triangle Community Foundation — Support for Education and Youth & The Better Place Fund
William C. Etheridge Foundation
Woodson Family Foundation
W. Trent Ragland Jr. Foundation